

Manufacturer with Over  
60+ Years Experience

Certified Manufacturing Processes  
for Consistency

Listened & Learned from the  
ICF Professionals

Design the ICF Contractors  
Asked For

Industrial Strength

Reversible Form Interlock

Industry Standard 48" X 16"

Interlock that Holds Tight

Reinforced Extended Length Corners

Industry Standard Flat Interior Wall for  
Maximum Concrete Flow

Complete Testing & Code Approvals

Bundle Sizing for Ease of Handling  
and Stacking

Increased Recycled Content for  
LEED Points

US and Canadian Field Support Team

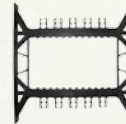
In-Field and Corporate  
Technical Support

Local Dealer Network

*The rest is about to be history...*

**BUILDING CODE COMPLIANCE**  
ICC ESR-2270  
2009 International Codes IRS & IBC  
Miami Dade NOA No. 13-0124.01  
Florida Product Approval #FL7497-R1  
Wisconsin Evaluation 200718-I  
City of Los Angeles RR25689  
City of New York MEA 201-08-M  
CCMC 13472-R  
Intertek Provides Third-Party Inspections

**PRODUCT TECHNICAL TESTING**  
ASTM C578  
ASTM E 84 (ANSI/UL 723)  
ASTM E119  
ASTM E90  
CAN / ULC S701  
CAN / ULC S102  
CAN / ULC S101



Scrap from our  
1.5 billion container  
parts are recycled each  
year and used in the  
Fox Block ties.



Industrial Strength Insulated Concrete Forms (ICFs)



A PRODUCT OF:



LIKE US  
Fox Blocks

FOLLOW US  
@foxblocksicf

MAKING YOUR SUCCESS OUR DESTINATION

**FAMILY OWNED SINCE 1946**

6110 Abbott Drive | Omaha, NE 68110 | (877) 369-2562  
www.foxblocks.com

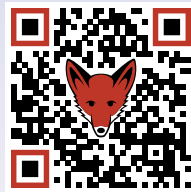
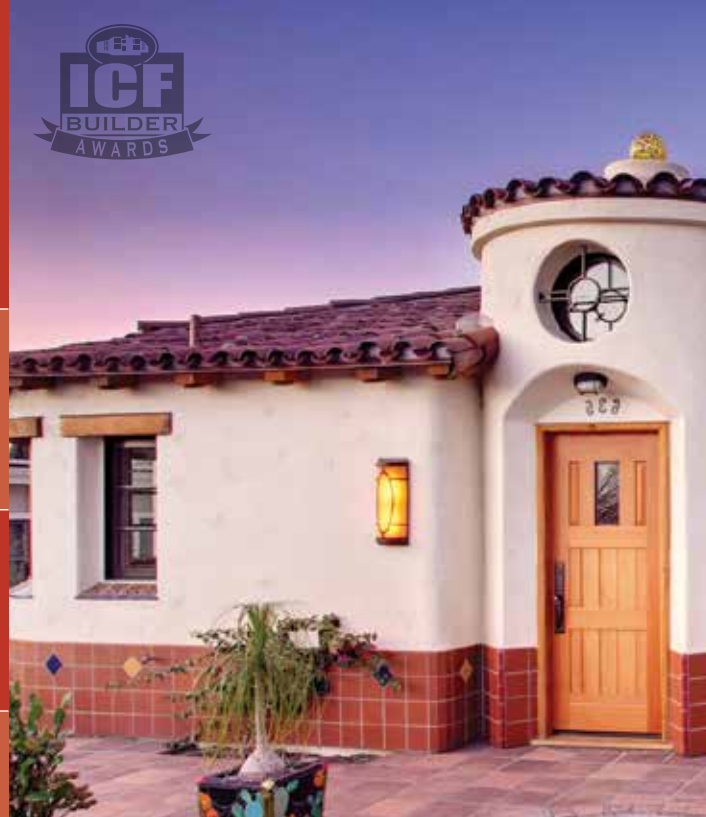
PRESENTING OUR  
INDUSTRY-PROVEN **ICF**

FOUNDATION

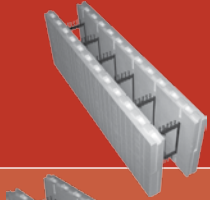
QUALITY

SUPPORT

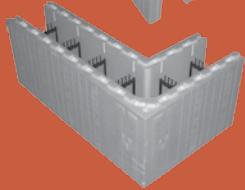
# STANDARD PRODUCTS



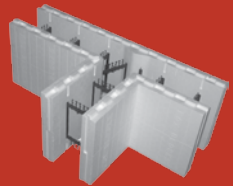
www.foxblocks.com



**STRAIGHT**  
4" , 6", 8", 10", and 12"



**90 DEGREE EXTENDED CORNER**  
4" , 6", 8", 10", and 12"



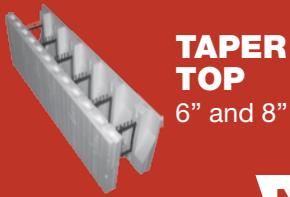
**T-BLOCK**  
6" and 8"



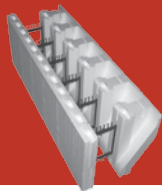
**FOX BUCK**  
6" , 8", and 10"



**ENERGY STICK**  
Fits All Sizes

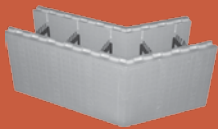


**TAPER TOP**  
6" and 8"

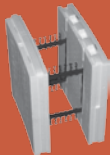


**CORBEL LEDGE**  
6" and 8"

**NEW FOR 2014!**  
**xLerator Ledge Reinforcement**



**45 DEGREE**  
4", 6", and 8"



**RADIUS BLOCK**  
6" at 5', 6', 7', 8', 9', or 10' Radius Measured to Inside Face

**AVAILABLE NOW!**  
**tieKey Masonry Anchor**



**HV CLIP**  
All Sizes, Works Horizontal or Vertical

## FOR THE CONTRACTOR:

Furring Strip is a Full 1½" Wide and 16" Tall Industry Standard  
Continuous Floor to Ceiling Fasting

Ties Stack on Top of Each Other  
Eliminates the Settling of Forms During Concrete Placement  
Walls Stay Straighter during Concrete Placement

True 1.5 Density EPS Foam  
Forms Always Feel Solid  
Less Damage to Forms During Handling

Reversible  
All Corner Forms are the "Right" Corner Forms  
Less Jobsite Waste

Extended Length Corner Form  
Corner Ties Further Back into the Wall for Stability  
Patented Corner Bracket Adds Strength where it is Needed

Engineered Ties  
Designed to Stack Lap Joints Vertically  
Open Truss Design Allows Maximum Concrete Consolidation

## FOR THE OWNER:

**RESPONSIBILITY**  
**50%+ By Weight Recycled Content**  
Eco-Friendly Is The Right Thing to Do  
Adds Credit Points for LEED Buildings

**SAVINGS**  
**Proven Energy Efficiency**  
Increases Personal Savings while Reducing Environmental Impact  
Cost Effective to Own and Operate

**COMFORT**  
**Constant Room Temperatures**  
Healthier to Live and Work In  
No More Drafts or Cold-Hot Spots

**PEACE**  
**A Very Quiet Home/Work Environment**  
Increased Personal Health  
Less Sound Issues when Located in High Traffic Areas

**SECURITY**  
**Strength Of Reinforced Concrete Walls**  
A Protection Barrier for You and Your Family  
Proven to be Safer in High Wind & Seismic Areas

**VALUE**  
**Environmentally Friendly Buildings**  
Energy Savings is a Top Priority for Resale  
Resistant to Mold and Other Water Maintenance Issues

**SAFETY**  
**Resistance**  
Walls Provide Up to a 4-Hour Fire Resistance Rating  
ICF Walls Better Protect Occupants from Windblown Debris

Live and work in the peace and quiet of a Fox Block building knowing you are safer from whatever nature throws at you, from hot to cold, tornados to hurricanes. Relax in the comfort of an insulated concrete building.

Learn more at: [www.FoxBlocks.com](http://www.FoxBlocks.com)